

**YOU DESERVE THE BEST SECURITY**

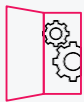
Smart-1 Security Management

7th Generation Appliances

Smart-1 is a centralized security management platform that aggregates and correlates events and logs across network environments, including hybrid mesh networks, cloud services, and mobile infrastructures. This platform offers powerful add-on policy management tools and AI apps to simplify security administration.

Smart-1 provides dynamic policy enforcement to secure the entire network, including DevOps assets and cloud-based workloads. Check Point's newest 7th generation Smart-1 appliances are built for high performance and scalability, with robust hardware and OS.

Today's networks face a continuous increase in traffic and explosive growth in device connections, requiring higher volumes of event logging, analysis, and storage. To meet these needs, Smart-1 700/7000 expandable appliances provide up to 70% higher log rate, up to 70 TB of NVMe SSD storage, up to 384 GB of RAM, and up to 56 CPU cores to manage up to 10,000 gateways/firewalls in a single unit.



**Greater On-Demand
Scalability**



**New AI Services
& Automation**



**Accelerated
Log Rate**



**Greater Log
Storage Capacity**



7000XL/UL (Top) 7000L (Middle) 700S/M (Bottom)

- **Storage**
All appliances support RAID
- **Power Supply**
All models are supplied with redundant power supply (1+1)
- **Connectivity**
All models come with 4 x 1/10GbE SFP to provide redundancy
- **High Availability**
Active/standby management platform
- **Lights Out Management (LOM) Card**
Dedicated out of band management interface

Quantum Smart-1

R82 | Security Management Server | Multi-Domain | AI Powered Expansion Packages

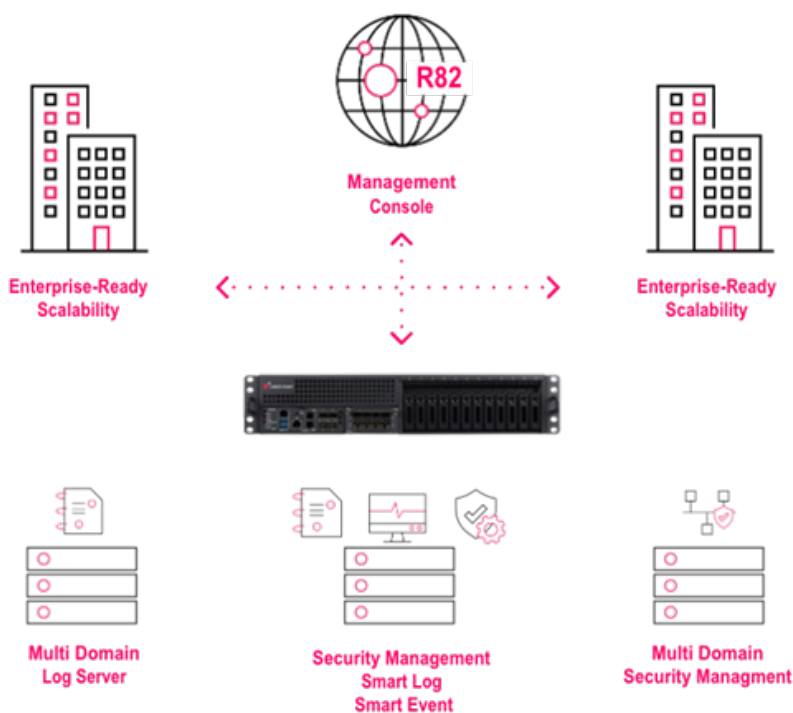
Tackling Policy Management Challenges with Powerful Add-on Apps

In addition to higher performance appliances, Check Point introduces innovative policy management apps and AI-powered tools to simplify administration with the following capabilities:

- AI assistant and policy analysis to resolve complicated policy conflicts, assure compliance, maintain policy hygiene, and perform pre-audit assessments
- Real-time, customizable event reporting and analysis
- Automated threat prevention and response across the network; enforce identity-based security policies; integration with 3rd party identity providers and endpoint security systems
- Proactive firewall infrastructure monitoring with AIOPs for analysis and lifecycle management

Key Features and Benefits

- Manage up to 1,500 gateways/firewalls in a single domain with a single management appliance, or up to 10,000 gateways in a single appliance using multi-domain configuration
- Accelerated log rate to address threats with real-time event analysis, compliance checks, and reporting
- Fast system response & load times; up to 70 TB of NVMe storage, for high-speed access and low latency



Spotlight

Unified Security Management Platform

Manage all security aspects from policy to threat prevention with a single console, covering both physical and virtual environments. This consolidated approach boosts operational efficiency. Additionally, a unified policy now controls everything from users to data to gateways, all managed under one policy.



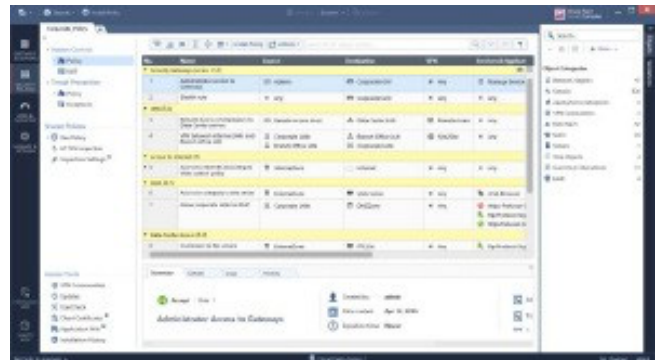
Resolve Policy Issues with Powerful Add-On Applications

Packages include *AI Copilot*, *Policy Insights*, *Policy Auditor*, *SmartEvent*, *Compliance*, *centralized Identity* and *Playblocks* to tighten and automate policy, mitigate security gaps, integrate 3rd party systems. AI Copilot is a generative AI assistant to investigate policy issues faster with expert insights and recommendations.

AIOps provides proactive firewall infrastructure monitoring and management alerts.

Multi-domain Management

Easily manage hundreds of private networks within the same infrastructure and create up to 200 domains based on geography, business unit or security function.

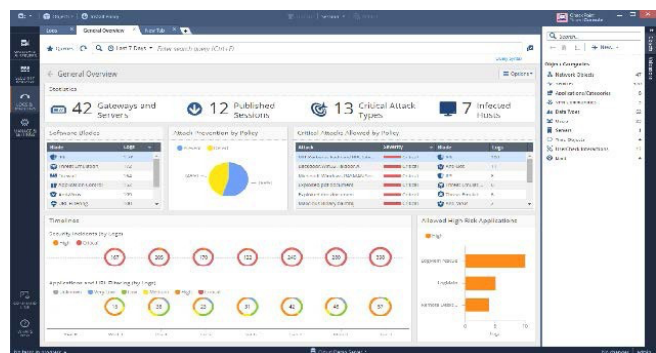


Reports & Compliance

Gain real-time control and monitoring of all your gateways. Effortlessly generate and schedule reports. Ensure adherence to over 300 security best practices and regulatory compliance checks.

Advanced Real-Time Threat Management

Augment your forensic capabilities with full integration of logging, monitoring, events, governance, and compliance. SmartConsole offers unmatched visibility and control throughout your network.






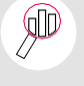




Modular and Scalable

These modular appliances offer up to 56 cores, 384GB RAM, and 70TB of storage.

The Smart-1 700/7000 series address the full range of price, performance and network requirements.

◀ Smart-1 700/7000 appliances run on software ver. R82 or higher.

Add-On Applications For AI-Powered Security Management

Unified Identity & Policy		Collaborative Threat Prevention		Operational Simplicity	
Quantum Policy Auditor  Assure compliance with security guidelines	Quantum Policy Insights  Optimize policy & ensure zero trust	Infinity Playblocks  Collaborative threat prevention	SmartEvent  Manage, report, and analyze events	Infinity AI Copilot  AI-Based security assistant	Infinity AI Ops  Preventative monitoring for infrastructure
Infinity Identity  Authenticated access to sensitive resources	Compliance  Meet regulations through best practices	AI-powered security management secures hybrid networks by fixing policy vulnerabilities and conflicts; centralizing 3rd party identity and endpoint security solutions, and proactively monitoring firewall infrastructure			

Security Management Add-On Packages

Premium or Complete Bundles for Smart-1 Appliances, Smart-1 Cloud, or Quantum Management Software.

[See SKUs on Page 14]

	Premium <small>NEW</small>	Complete <small>NEW</small>
SmartEvent [^] Manage, analyze, and report events	✓	✓
Compliance [^] Comply with industry regulations, and align with best practices	✓	✓
Infinity Playblocks Collaborative & automated threat prevention	✓	✓
AI Ops Actionable & preventive infrastructure monitoring	✓	✓
Infinity Identity Authenticated zero trust access to sensitive resources	✓	✓
Policy Auditor Assure compliance with security guidelines		✓
Policy Insights Optimizing policies and ensure zero trust		✓
Infinity AI Copilot AI-based security assistant		✓

[^] Can be ordered individually

AI-Powered Security Management Solution Brief

Appliance Specifications

Smart-1 (7th generation)					
Appliances	700-S	700-M	7000-L	7000-XL	7000 -UL
Capacity & Performance					
Managed Gateways Base/ Plus configuration	5/10	25/50	75/150	200/400 ¹	250/500 ¹
Maximum Domains (Multi-Domain Management)	-	-	50 ⁴		200 ⁴
Sustained Indexed Logs per Sec	10,000/10,000 ²	22,000/20,000 ²	32,000/32,000 ²	60,000/60,000 ²	75,000/75,000 ²
GB per Day of Logs	430	800	1,218	2,284	2,757
Hardware Specifications					
Cores/Threads	4/8	14/20	24/48	48/96	56/112
Storage Options	2 x 4TB HDD	2 x 8TB HDD	4 x 8TB HDD / 8 x 8TB HDD	6 x 4TB SSD NVMe or 12 x 4TB SSD NVMe	6 x 8TB SSD NVMe or 12 x 8TB SSD NVMe
Effective Storage (default)	4TB	8TB	14.5TB (4 x 8TB HDD RAID- 6)	17.4TB (6 x 4TB SSD NVMe RAID 5)	34.9TB (6 x 8TB SSD NVMe RAID-5)
Effective Storage (max)	-	-	43.6TB (8 x 8TB HDD RAID- 6)	34.9TB (12x 4TB SSD NVMe RAID-50)	69.8TB (12 x 8TB SSD NVMe RAID-50)
RAID Type	1 (software)	1		5,6,10,50,60	
Memory (RAM) Default/Max	16/32 GB	32/64 GB	128/192 GB		256/384 GB
Number of Managed Gateways					
Base configuration	5	25	75	200	250
Plus configuration	10	50	150	400	500
Max Managed Gateways per single Domain or SMS	10	50	150		1,500 ³
Max Managed gateways at the appliance level		N/A	150		10,000 ⁴

¹ Scale managed devices on demand up to 1,500 gateways on a single domain or SMS and up to 10K Gateways per appliance using Multi-Domain environments.

² 700S and 700M tested with SmartLog and SmartEvent configuration, 7000L/7000XL/7000UL tested with dedicated SmartEvent configuration. For sizing and recommended configurations review sk181782 - Security Management Sizing.

³ Requires gateways expansion package.

⁴ Requires Multi-Domain license and gateways expansion package.

Interfaces					
Appliances	700-S	700-M	7000-L	7000-XL	7000 -UL
On board SFP Ports			4x 1/10G (fiber)		
Console Port (RJ45)			1x RJ45 (for a serial connection)		
LOM			1x RJ45 1G (to connect to the LOM Card)		
AUX			1x RJ45 1G		
USB Ports 3.0			x2		
Console USB			Type-C (for a serial connection)		
Extended Network Interfaces (1 Expansion slot)			Optional		
MGMT Port			1x RJ45 1G		
Physical					
Enclosure	1U		1		2U
Standard (W x D x H)	17.24in. x 17.59in. x 1.74in.			17.24in. x 23.92in. x 3.49in.	
Metric (W x D x H)	438 mm x 446.8 mm x 44.20 mm			438mm x 607.55mm x 88.60mm	
Weight	8.03Kg (17.70lbs)	8.78Kg (19.36lbs)	18.880Kg (41.62lbs)	15.697 Kg (34.71lbs.)	
Power					
Dual, Hot-Swappable PSU	No (1+1 internal redundant PSU)		Yes		
Dual, Hot-Swappable DC PSU	No		Optional		
Power Input	100-240VAC (3A) 47-63Hz	100-240VAC (4A) 47-63Hz	AC:100-127VAC (12A) 200-240VAC (7A) 47-63Hz DC:48-60VDC (37A)	AC:100-127VAC (12A), 200-240VAC (9.5A) 47-63Hz DC: 48 to -60VDC (45.5A)	
Power Supply Rating	2x internal 260W PSUs	2x 300W PSUs	2x 1300W PSUs	2x 1600W PSUs	
Power Consumption (avg/max)	126W/210W	114W/190W	436W/728W	523W/872W	540W/919W
Environment Conditions					
Operating Environment	41° - 95° F 5° - 35° C, 10-80% Humidity				
Storage Environment	-40° - 149° F -40° - 65° C, 5-95% Humidity				
Certifications					
Safety/Emissions/Environment	Safety: CB IEC 62368-1, CE LVD EN62368-1, UL62368-1, ASNZS 62368.1 EMC & Emissions: CE, FCC IC, VCCI, ASNZS ACMA Environmental: ROHS, REACH, WEEE, ISO14001				

Ordering Smart-1 Appliances

Smart-1 Appliances

Smart-1 700-S

SKU

Smart-1 700S Base Security Management, Log and SmartEvent appliance for 5 gateways (SmartEvent & Compliance 1 year)	CPAP-NGSM700S-BASE
Smart-1 700S Base SmartEvent appliance for 5 gateways (perpetual)	CPAP-NGSM700S-BASE-EVNT
Smart-1 700S Plus Security Management, Log and SmartEvent appliance for 10 GWs (SmartEvent & Compliance 1 year)	CPAP-NGSM700S-PLUS
Smart-1 700-S Base Security Management, Log and SmartEvent appliance for 5 gateways (with Premium package for 1 year)	CPAP-NGSM700S-BASE-PREMIUM
Smart-1 700-S Base Security Management, Log and SmartEvent appliance for 5 gateways (with Complete package for 1 year)	CPAP-NGSM700S-BASE-COMPLETE
Smart-1 700S Plus SmartEvent appliance for 10 gateways (perpetual)	CPAP-NGSM700S-PLUS-EVNT
Smart-1 700-S Plus Security Management, Log and SmartEvent appliance for 10 Gateways (with Premium package for 1 year)	CPAP-NGSM700S-PLUS-PREMIUM
Smart-1 700-S Plus Security Management, Log and SmartEvent appliance for 10 Gateways (with Complete package for 1 year)	CPAP-NGSM700S-PLUS-COMPLETE

Smart-1 700-M

SKU

Smart-1 700M Base Security Management, Log and SmartEvent appliance for 25 gateways (SmartEvent & Compliance 1 year)	CPAP-NGSM700M-BASE
Smart-1 700M Base SmartEvent dedicated appliance for 25 gateways (perpetual)	CPAP-NGSM700M-BASE-EVNT
Smart-1 700-M Base Security Management, Log and SmartEvent appliance for 25 gateways (with Premium package for 1 year)	CPAP-NGSM700M-BASE-PREMIUM
Smart-1 700-M Base Security Management, Log and SmartEvent appliance for 25 gateways (with Complete package for 1 year)	CPAP-NGSM700M-BASE-COMPLETE
Smart-1 700M Plus Security Management, Log and SmartEvent appliance for 50 gateways (SmartEvent & Compliance 1 year)	CPAP-NGSM700M-PLUS
Smart-1 700-M Plus Security Management, Log and SmartEvent appliance for 50 gateways (with Premium package for 1 year)	CPAP-NGSM700M-PLUS-PREMIUM
Smart-1 700M Plus SmartEvent dedicated appliance for 50 gateways (perpetual)	CPAP-NGSM700M-PLUS-EVNT

Smart-1 7000-L

SKU

Smart-1 7000L Base Security Management, Log and SmartEvent appliance for 75 gateways (SmartEvent & Compliance 1 year)	CPAP-NGSM7000L-BASE
Smart-1 7000L Base Multi-Log for 75 gateways and 10 domains (perpetual)	CPAP-NGSM7000L-BASE-MLOG-10
Smart-1 7000L Base SmartEvent appliance for 75 gateways (perpetual)	CPAP-NGSM7000L-BASE-EVNT
Smart-1 7000-L Base Security Management, Log and SmartEvent appliance for 75 gateways (with Premium package for 1 year)	CPAP-NGSM7000L-BASE-PREMIUM
Smart-1 7000-L Base Security Management, Log and SmartEvent appliance for 75 gateways (with Complete package for 1 year)	CPAP-NGSM7000L-BASE-COMPLETE
Smart-1 7000L Plus Security Management, Log and SmartEvent appliance for 150 gateways (SmartEvent & Compliance 1 year)	CPAP-NGSM7000L-PLUS
Smart-1 7000L Plus Multi-Log for 150 gateways and 10 domains (perpetual)	CPAP-NGSM7000L-PLUS-MLOG-10
Smart-1 7000L Plus SmartEvent appliance for 150 gateways (perpetual)	CPAP-NGSM7000L-PLUS-EVNT
Smart-1 7000-L Plus Security Management, Log and SmartEvent appliance for 150 gateways (with Premium package for 1 year)	CPAP-NGSM7000L-PLUS-PREMIUM
Smart-1 7000-L Plus Security Management, Log and SmartEvent appliance for 150 gateways (with Complete package for 1 year)	CPAP-NGSM7000L-PLUS-COMPLETE

Ordering Smart-1 Appliances

Smart-1 Appliances¹

Smart-1 7000-XL	SKU
Smart-1 7000XL Base Security Management, Log and SmartEvent Appliance for 200 GWs (SmartEvent & Compliance 1 year)	CPAP-NGSM7000XL-BASE
Smart-1 7000XL Base Multi-Log for 200 Gateways and 10 domains (perpetual)	CPAP-NGSM7000XL-BASE-MLOG10
Smart-1 7000XL Base SmartEvent appliance for 200 Gateways (perpetual)	CPAP-NGSM7000XL-BASE-EVNT
Smart-1 7000-XL Base Security Management, Log and SmartEvent Appliance for 200 Gateways (with Premium package for 1 year)	CPAP-NGSM7000XL-BASE-PREMIUM
Smart-1 7000-XL Base Security Management, Log and SmartEvent Appliance for 200 Gateways (with Complete package for 1 year)	CPAP-NGSM7000XL-BASE-COMPLETE
Smart-1 7000XL Plus Security Management, Log and SmartEvent Appliance for 400 GWs (SmartEvent & Compliance 1 year)	CPAP-NGSM7000XL-PLUS
Smart-1 7000XL Plus Multi-Log for 400 Gateways and 10 domains (perpetual)	CPAP-NGSM7000XL-PLUS-MLOG10
Smart-1 7000-XL Plus Security Management, Log and SmartEvent Appliance for 400 Gateways (with Premium package for 1 year)	CPAP-NGSM7000XL-PLUS-PREMIUM
Smart-1 7000-XL Plus Security Management, Log and SmartEvent Appliance for 400 Gateways (with Complete package for 1 year)	CPAP-NGSM7000XL-PLUS-COMPLETE
Smart-1 7000XL Plus SmartEvent appliance for 400 Gateways (perpetual)	CPAP-NGSM7000XL-PLUS-EVNT
Smart-1 7000-UL	SKU
Smart-1 7000UL Base Security Management, Log and SmartEvent Appliance for 250 GWs (SmartEvent & Compliance 1 year)	CPAP-NGSM7000UL-BASE
Smart-1 7000UL Base Multi-Log for 250 Gateways and 10 domains (perpetual)	CPAP-NGSM7000UL-BASE-MLOG10
Smart-1 7000UL Base SmartEvent appliance for 250 Gateways (perpetual)	CPAP-NGSM7000UL-BASE-EVNT
Smart-1 7000-UL Base Security Management, Log and SmartEvent Appliance for 250 Gateways (with Premium package for 1 year)	CPAP-NGSM7000UL-BASE-PREMIUM
Smart-1 7000-UL Base Security Management, Log and SmartEvent Appliance for 250 Gateways (with Complete package for 1 year)	CPAP-NGSM7000UL-BASE-COMPLETE
Smart-1 7000UL Plus Security Management, Log and SmartEvent Appliance for 500 GWs (SmartEvent & Compliance 1 year)	CPAP-NGSM7000UL-PLUS
Smart-1 7000-UL Plus Security Management, Log and SmartEvent Appliance for 500 Gateways (with Premium package for 1 year)	CPAP-NGSM7000UL-PLUS-PREMIUM
Smart-1 7000-UL Plus Security Management, Log and SmartEvent Appliance for 500 Gateways (with Complete package for 1 year)	CPAP-NGSM7000UL-PLUS-COMPLETE
Smart-1 7000UL Plus Multi-Log for 500 Gateways and 10 domains (perpetual)	CPAP-NGSM7000UL-PLUS-MLOG10
Smart-1 7000UL Plus SmartEvent appliance for 500 Gateways (perpetual)	CPAP-NGSM7000UL-PLUS-EVNT

¹ SmartEvent and Compliance are included for one year, extension SKUs are available

Ordering Smart-1 Appliances

Smart-1 7000 Upgrades (Base to Plus)

Smart-1 7000-S Base to Plus

SKU

Upgrade kit of Smart-1 700S Base Security Management to Smart-1 700S Plus Security Management, Log and SmartEvent

CPAC-NGSM700S-UPG-PLUS

Upgrade kit of Smart-1 700S Base SmartEvent to Smart-1 700S Plus SmartEvent

CPAC-NGSM700S-UPG-PLUS-EVNT

Smart-1 7000-M Base to Plus

SKU

Upgrade kit of Smart-1 700M Base to Smart-1 700M Plus Security Management Server, Log and SmartEvent

CPAC-NGSM700M-UPG-PLUS

Upgrade kit of Smart-1 700M Base SmartEvent to Smart-1 700M Plus SmartEvent

CPAC-NGSM700M-UPG-PLUS-EVNT

Smart-1 7000-L Base to Plus

SKU

Upgrade kit of Smart-1 7000L Base to Smart-1 7000L Plus Security Management, Log and SmartEvent

CPAC-NGSM7000L-UPG-PLUS

Upgrade kit of Smart-1 7000L Base Multi-Log to Smart-1 7000L Plus SmartEvent

CPAC-NGSM7000L-UPG-PLUS-MLOG

Upgrade kit of Smart-1 7000L Base SmartEvent to Smart-1 7000L Plus SmartEvent

CPAC-NGSM7000L-UPG-PLUS-EVNT

Smart-1 700XL Base to Plus

SKU

Upgrade kit of Smart-1 7000XL Base to Smart-1 7000XL Plus Security Management, Log and SmartEvent

CPAC-NGSM7000XL-UPG-PLUS

Upgrade kit of Smart-1 7000XL Base Multi-Log to Smart-1 7000XL Plus Multi-Log

CPAC-NGSM7000XL-UPG-PLUS-MLOG

Upgrade kit of Smart-1 7000XL Base SmartEvent to Smart-1 7000XL Plus SmartEvent

CPAC-NGSM7000XL-UPG-PLUS-EVNT

Ordering Smart-1 Appliances

Interface Cards and Transceivers

Appliances Compatibility Interface Cards

SKU

All Smart-1 models	CPAC-8-1/10F-D
All Smart-1 models	CPAC-4-10/25F-D
7000L, 7000XL, 7000UL	CPAC-2-40/100F-D

Network Cards

SKU

8 Ports 1000Base-F SFP / 10GBase-F SFP+ interface card for 9000/19000/29000/ Smart-1 appliances	CPAC-8-1/10F-D
4 Ports 10GBase-F SFP+ / 25GBase-F SFP28 interface card for 9000/19000/29000/ Smart-1 appliances	CPAC-4-10/25F-D
2 Port 40GBase QSFP+ / 100GBase QSFP28 interface card for 9000/19000/29000/ Smart-1 appliances	CPAC-2-40/100F-D

Transceivers compatible with On-board (4 x 1/10GBASE SFP+)

SKU

SFP transceiver module for 1000 BASE fiber ports - long range (1000BASE-LX), SM Fiber, LC	CPAC-TR-1LX-D
SFP transceiver module for 1000 BASE fiber ports - short range (1000BASE-SX), MM Fiber, LC	CPAC-TR-1SX-D
SFP transceiver to 1000 BASE-T RJ45 (Copper), CU, RJ45	CPAC-TR-1T-D
SFP+ transceiver module for 10GbE fiber ports - long range (10GBASE-LR), SM Fiber, LC	CPAC-TR-10LR-D
SFP+ transceiver module for 10GbE fiber ports - short range (10GBASE-SR), MM Fiber, LC	CPAC-TR-10SR-D
SFP+ transceiver 10GBASE-T RJ45 (Copper) - for links up to 30m over CAT6a/CAT7, CU, RJ45	CPAC-TR-10T-D

Transceivers compatible with CPAC-4-10/25F-D

SKU

SFP transceiver module for 1000 BASE fiber ports - long range (1000BASE-LX), SM Fiber, LC	CPAC-TR-1LX-D
SFP transceiver module for 1000 BASE fiber ports - short range (1000BASE-SX), MM Fiber, L	CPAC-TR-1SX-D
SFP transceiver to 1000 BASE-T RJ45 (Copper), CU, RJ45	PAC-TR-1T-D
SFP+ transceiver module for 10GbE fiber ports - long range (10GBASE-LR), SM Fiber, LC	CPAC-TR-10LR-D
SFP+ transceiver module for 10GbE fiber ports - short range (10GBASE-SR), MM Fiber, LC	CPAC-TR-10SR-D

Ordering Smart-1 Appliances

Interface Cards and Transceivers (continued)

Transceivers compatible with CPAC-4-10/25F-D (continued)

SKU

SFP+ transceiver 10GBASE-T RJ45 (Copper) - for links up to 30m over CAT6a/CAT7, CU, RJ45

CPAC-TR-10T-D

SFP+ transceiver module for 10GbE fiber ports - for links up to 40km (10GBASE-ER), SM Fiber, LC

CPAC-TR-10ER-D

SFP28 transceiver module for 25GbE fiber ports - long range (25GBASE-LR), SM Fiber, LC

CPAC-TR-25LR-D

SFP28 transceiver module for 25GbE fiber ports - short range (25GBASE-SR), MM Fiber, LC

CPAC-TR-25SR-D

Transceivers compatible with CPAC-2-40/100F-D

SKU

SFP+ transceiver module for 10GbE fiber ports - for links up to 40km (10GBASE-ER) SM Fiber, LC with QSFP28 Adapter

CPAC-TR-10ER-D-ADP

SFP28 transceiver module for 25GbE fiber ports - short range (25GBASE-SR) MM Fiber, LC with QSFP28 Adapter

CPAC-TR-25SR-D-ADP

QSFP+ transceiver module for 40GbE fiber ports- for links up to 40km (40GBASE-ER4), SM Fiber, LC

CPAC-TR-40ER4

QSFP28 transceiver module for 100GbE fiber ports, - for links up to 40km (100GBASE-ER4), SM Fiber, LC

CPAC-TR-100ERL4

Hardware

Hardware Expansion

SKU

Memory upgrade kit from 16GB to 32GB for Smart-1 700S appliance

CPAC-RAM16GB-SM700S

Additional/Replacement 4TB Hard Drive for Smart-1 700S appliance

CPAC-HDD-4TB-SM700S

Memory upgrade kit from 32GB to 64GB for Smart-1 700M appliance

CPAC-RAM32GB-SM700M

Additional/Replacement 8TB Hard Drive for Smart-1 700M / 7000L appliance

CPAC-HDD-8TB-SM700M/SM7000L

Memory upgrade kit from 128GB to 192GB for Smart-1 7000L appliance

CPAC-RAM64GB-SM7000L

Memory upgrade kit from 256GB to 384GB for Smart-1 7000XL / 7000UL appliance

CPAC-RAM128GB-SM7000XL/7000UL

Ordering Smart-1 Appliances

Hardware (continued)

Hardware Expansion (continued)

SKU

Additional/Replacement 4TB NVMe Drive for Smart-1 7000XL	CPAC-SSD-4TB-SM7000-XL
--	------------------------

Additional/Replacement 8TB NVMe Drive for Smart-1 7000UL	CPAC-SSD-8TB-SM7000UL
--	-----------------------

Spares, Replacements and Rails

SKU

Slide RAILS for Smart-1 700-S/700M appliance	CPAC-RAILS-SM700S/700M
--	------------------------

Extended rail kit for Smart-1 700 and 7000 appliances	CPAC-RAILS-EXT-SM700/7000
---	---------------------------

Replacement AC Power Supply for Smart-1 700M appliance	CPAC-PSU-AC-SM700M
--	--------------------

Spare sliding rails kit for Smart-1 7000L, 7000XL, and 7000Ultra appliances	CPAC-RAILS-SM7000
---	-------------------

Dual DC power supplies for Smart-1 7000L appliances	CPAC-PSU-DC-Dual-SM7000L
---	--------------------------

Replacement AC Power Supply for Smart-1 7000L appliance	CPAC-PSU-AC-SM7000L
---	---------------------

Dual DC power supplies for Smart-1 7000XL / 7000UL appliances	CPAC-PSU-DC-Dual-SM7000XL/7000UL
---	----------------------------------

Replacement AC Power Supply for Smart-1 7000XL / 7000UL appliances	CPAC-PSU-AC-SM7000XL/7000UL
--	-----------------------------

Management Software for Your Own Physical or Virtual Appliances

Security Management Software (for Open Server)

SKU

Next Generation Security Management Software Multi-domain for 150 gateways and 5 domains (SmartEvent & Compliance 1 year)	CPSM-NGSM150-MD5
---	------------------

Next Generation Security Management SmartEvent dedicated Server for 150 gateways (perpetual)	CPSM-NGSM150-EVNT
--	-------------------

Next Generation Security Management Software for 150 gateways (SmartEvent & Compliance 1 year)	CPSM-NGSM150
--	--------------

Next Generation Security Management Multi-Log Manager software for 150 gateways and 10 domains (perpetual)	CPSM-NGSM150-MLOG10
--	---------------------

Next Generation Security Management Software for 150 gateways (with Premium package for 1 year)	CPSM-NGSM150-PREMIUM
---	----------------------

Next Generation Security Management Software for 150 gateways (with Complete package for 1 year)	CPSM-NGSM150-COMPLETE
--	-----------------------

Next Generation Security Management Software Multi-domain for 150 gateways and 5 domains (with Premium package for 1 year)	CPSM-NGSM150-MD5-PREMIUM
--	--------------------------

Next Generation Security Management Software Multi-domain for 150 gateways and 5 domains (with Complete package for 1 year)	CPSM-NGSM150-MD5-COMPLETE
---	---------------------------

Management Software

Management Software for Your Own Physical or Virtual Appliances (continued)

Security Management Packages	SKU
Next Generation Security Management Software Multi-domain for 50 gateways and 5 domains (SmartEvent & Compliance 1 year)	CPSM-NGSM50-MD5
Next Generation Security Management SmartEvent dedicated Server for 50 gateways (perpetual)	CPSM-NGSM50-EVNT
Next Generation Security Management Software for 50 gateways (SmartEvent & Compliance 1 year)	CPSM-NGSM50
Next Generation Security Management Multi-Log Manager software for 50 gateways and 10 domains (perpetual)	CPSM-NGSM50-MLOG10
Next Generation Security Management Software for 50 gateways (with Premium package for 1 year)	CPSM-NGSM50-PREMIUM
Next Generation Security Management Software for 50 gateways (with Complete package for 1 year)	CPSM-NGSM50-COMPLETE
Next Generation Security Management Software Multi-domain for 50 gateways and 5 domains (with Premium package for 1 year)	CPSM-NGSM50-MD5-PREMIUM
Next Generation Security Management Software Multi-domain for 50 gateways and 5 domains (with Complete package for 1 year)	CPSM-NGSM50-MD5-COMPLETE
Next Generation Security Management Software Multi-domain for 25 gateways and 5 domains (SmartEvent & Compliance 1 year)	CPSM-NGSM25-MD5
Next Generation Security Management SmartEvent dedicated Server for 25 gateways (perpetual)	CPSM-NGSM25-EVNT
Next Generation Security Management Software for 25 gateways (SmartEvent & Compliance 1 year)	CPSM-NGSM25
Next Generation Security Management Log dedicated software for 25 gateways (perpetual)	CPSM-NGSM25-LOG
Next Generation Security Management Software for 25 gateways (with Premium package for 1 year)	CPSM-NGSM25-PREMIUM
Next Generation Security Management Software for 25 gateways (with Complete package for 1 year)	CPSM-NGSM25-COMPLETE
Next Generation Security Management Software Multi-domain for 25 gateways and 5 domains (with Premium package for 1 year)	CPSM-NGSM25-MD5-PREMIUM
Next Generation Security Management Software Multi-domain for 25 gateways and 5 domains (with Complete package for 1 year)	CPSM-NGSM25-MD5-COMPLETE
Next Generation Security Management SmartEvent dedicated Server for 10 gateways (perpetual)	CPSM-NGSM10-EVNT
Next Generation Security Management Software for 10 gateways (SmartEvent & Compliance 1 year)	CPSM-NGSM10
Next Generation Security Management Log dedicated software for 10 gateways (perpetual)	CPSM-NGSM10-LOG
Next Generation Security Management Software for 10 gateways (with Premium package for 1 year)	CPSM-NGSM10-PREMIUM
Next Generation Security Management Software for 10 gateways (with Complete package for 1 year)	CPSM-NGSM10-COMPLETE
Next Generation Security Management Software for 5 gateways (SmartEvent & Compliance 1 year)	CPSM-NGSM5
Next Generation Security Management SmartEvent dedicated Server for 5 gateways (perpetual)	CPSM-NGSM5-EVNT
Next Generation Security Management Software for 5 gateways (with Premium package for 1 year)	CPSM-NGSM5-PREMIUM
Next Generation Security Management Software for 5 gateways (with Complete package for 1 year)	CPSM-NGSM5-COMPLETE

Management Software (continued)

Expand Number of Managed Gateways Add-Ons (Appliance/Software/Virtual) (Perpetual Licenses*)

Security Management Packages	SKU
1,000 gateways extension for Next Generation Security Management Server to: Smart-1 7000XL / UL Plus/Smart-1 5150/NGSM-150	CPSB-GW-EXT-1000
500 gateways extension for Next Generation Security Management Server to: Smart-1 7000XL / UL Plus/Smart-1 5150/NGSM-150	CPSB-GW-EXT-500
250 gateways extension for Next Generation Security Management Server to: Smart-1 7000XL / UL Plus/Smart-1 5150/NGSM-150	CPSB-GW-EXT-250
50 gateways extension for Next Generation Security Management Server to: Smart-1 7000XL / UL Plus/Smart-1 5150/NGSM-150	CPSB-GW-EXT-50

Additional Domains (Perpetual Licenses*)

Additional Domains	SKU
5 domains package for Multi-domain Security Management	CPSB-DMN-5
10 domains package for Multi-domain Security Management	CPSB-DMN-10
25 domains package for Multi-domain Security Management	CPSB-DMN-25
50 domains package for Multi-domain Security Management	CPSB-DMN-50
100 domains package for Multi-domain Security Management	CPSB-DMN-100

* The above (9) perpetual licenses are for Check Point Smart-1 appliances and Open Server (customer's own physical or virtual appliances)

Security Management Packages (Appliance/Software/Virtual)

PREMIUM Package	SKU
Management Premium package for managing 5 gateways	CPSM-NGSM-PREM-5GW-1Y
Management Premium package for managing 10 gateways	CPSM-NGSM-PREM-10GW-1Y
Management Premium package for managing 25 gateways	CPSM-NGSM-PREM-25GW-1Y
Management Premium package for managing 50 gateways	CPSM-NGSM-PREM-50GW-1Y
Management Premium package for managing 75 gateways	CPSM-NGSM-PREM-75GW-1Y
Management Premium package for managing 150 gateways	CPSM-NGSM-PREM-150GW-1Y
Management Premium package for managing 200 gateways	CPSM-NGSM-PREM-200GW-1Y

Management Software (continued)

Security Management Packages Add-Ons (Appliance/Software/Virtual)

COMPLETE Package

SKU

Management Complete package for managing 5 gateways	CPSM-NGSM-CMPT-5GW-1Y
Management Complete package for managing 10 gateways	CPSM-NGSM-CMPT-10GW-1Y
Management Complete package for managing 25 gateways	CPSM-NGSM-CMPT-25GW-1Y
Management Complete package for managing 50 gateways	CPSM-NGSM-CMPT-50GW-1Y
Management Complete package for managing 75 gateways	CPSM-NGSM-CMPT-75GW-1Y
Management Complete package for managing 150 gateways	CPSM-NGSM-CMPT-150GW-1Y
Management Complete package for managing 200 gateways	CPSM-NGSM-CMPT-200GW-1Y
Management Complete package for managing 400 gateways	CPSM-NGSM-CMPT-400GW-1Y

Copilot monthly questions: Appliance/Software/ Virtual

Managed Gateways	5	10	25	50	75	150	200	250	400	500
Monthly Questions	100	200	250	400	500	800	1000	1250	2000	2500

Copilot monthly questions: Smart-1 Cloud

Managed Gateways	1 GW*	5 GW's
Monthly Questions	20	100

* Also applies for up to 5 Spark Gateways

Overall notes

- License can be installed on top of Management server contract (w/ NGSM license)
- The number of gateways in package license should be aligned with the management license
- License should be installed both on the primary and secondary management servers (when applicable)
- Individual capabilities (blades) cannot be purchased a-la-carte (except for SmartEvent and Compliance)

Worldwide Headquarters

5 Shlomo Kaplan Street, Tel Aviv 6789159, Israel | Tel: +972-3-753-4599

U.S. Headquarters

100 Oracle Parkway, Suite 800, Redwood City, CA 94065 | Tel: 1-800-429-4391

www.checkpoint.com