

PERFORMANCE

Display Size	23.8"
View Area	526.8x296.4 mm
Panel	In-Plane Switching
Backlight	WLED
Aspect Ratio	16:9
Resolution	2560x1440
Pixel Pitch	0.2058x0.2058 mm
Dot / Pixel Per Inch	123 dpi
View Angle (H / V)	178° / 178°
Response Time	4ms (Extreme mode) / 6ms (Normal mode)
Color Support	16.7 Million
Refresh Rate	48Hz - 120Hz
Brightness	300 cd/m ²
Contrast Ratio	1500:1
Color Gamut	99% sRGB, 99% BT.709
Screen Surface Treatment	Anti-glare
Curvature	Flat Panel
Camera	Modular Camera Support
Microphone	None
Speakers	Modular Speaker Support
Power Consumption (Typical / Maximum)	16.5W / 210W
Power Adapter	Integrated
Touchscreen	None

Smart System	None
DESIGN	
Stand	Tilt, Swivel, Pivot, Height Adjust Stand
Case Color	Eclipse Black
Side Bezel Width	2 mm
Mounting	Supports VESA mount 100 x 100 mm
ThinkCentre® M Series Support	Tiny Support

Pen	None
Dimensions (WxDxH)^[1]	<ul style="list-style-type: none">Lowest Position 539.8 x 190.0 x 350.8 mm (21.25 x 7.48 x 13.81 inches)Highest Position 539.8 x 190.0 x 505.8 mm (21.25 x 7.48 x 19.91 inches)Head Only 539.8 x 45.3 x 315.8 mm (21.25 x 1.78 x 12.43 inches)
Packaging Dimensions (WxDxH)	730 x 123 x 420 mm (28.74 x 4.84 x 16.54 inches)
Weight^[2]	<ul style="list-style-type: none">Monitor With Stand 5.6 kg (12.4 lbs)Monitor Head Only 3.6 kg (8.0 lbs)
Packaging Weight	8.4 kg (18.4 lbs)

CONNECTIVITY

USB Port	x USB-C® (USB 10Gbps, DP 1.4 Alt Mode HBR3, PD3.1 140W, USB upstream), 1x USB-B (USB 5Gbps, USB upstream), 4x USB-A (USB 5Gbps, 1x BC1.2, USB downstream), 1x USB-C® (USB 5Gbps, 15WPD, USB downstream)
Video Connector	1x HDMI® 2.1 TMDS, 1x DP 1.4 (HBR3), 1x DP 1.4 Out, 1x USB-C® (10Gbps, DP 1.4 Alt Mode HBR3)
Network Connectivity	1x RJ45, Ethernet (10M/100M/1000M/2500M)

SERVICE

Base Warranty	3-year
----------------------	--------

CERTIFICATIONS

Environmental Certification	ENERGY STAR® Certified, TCO 10.0, TCO Edge 2.1, EU Energy Efficiency Level (Level-D), EPEAT™ Gold
Ergonomic Certification	TÜV Rheinland® Eye Comfort 5 Stars, Eyesafe® Display 2.0, TÜV Low Blue Light (Hardware solution)
Sync Technology	None
Special Features	<ul style="list-style-type: none">HDR10 ComplianceFactory Calibration: Avg. Delta E<2 at sRGBLenovo® ThinkColour (Lenovo® Accessories and Display Manager) SupportLenovo® ThinkColour supports Windows® 10 & 11, Mac OS (functions vary across systems).Lenovo® Accessories and Display Manager is formerly Lenovo® Display Control Center.KVM Switch (with eKVM)LDFM (Lenovo® Display Fleet Manager)Mirrored Power ButtonMulti-syncNatural Low Blue LightSmart Power

SOFTWARE

Operating System	Support Windows® 10, Windows® 11
-------------------------	----------------------------------

ACCESSORIES

Video Cables	DP cable, USB-C® to USB-C® Gen 2 cable, USB-B to USB-A Gen 1 cable
---------------------	--

MODEL

Announce Date	: 2025-06-12	Region	: APS
EAN / UPC / JAN	: 0198156544810 / 198156544810 / None		

Note:
^[1] The system dimensions may vary depending on configurations.
^[2] The system weight is approximate and based on results in Lenovo lab, which varies depending on the source of component, variance of the distribution of each component, and manufacturing process. It may not be the exact weight for each specific model.
· Lenovo reserves the right to change specifications without notice.
To see more note information, please access the [web page](#).

Premium Care - Advanced Support from Real People. Real Fast.



REAL PERSON

Choose how you want to reach us - through the phone, chat or email - our expert technicians will take care of you.



REAL FAST

Highly trained technicians will provide you real-time solutions, whatever the issue, on your first contact. If needed, our team will schedule an onsite visit for the next business day.



HASSLE FREE

'Getting started' and 'how-to' assistance for hardware and software. Easy solutions that are simple to reach - that's how Premium Care delivers you the ideal support experience.



PC HEALTH CHECK

Free annual PC Health Check that allows our experts to spot issues before you do so they can resolve them quickly and help you avoid PC problems.

Accidental Damage Protection - Protection of your PC from the unexpected.

Experience shows that a significant portion of devices may be damaged (and not covered under warranty) in the first three years. Lenovo's Accidental Damage Protection service covers accidents beyond the system warranty such as drops, spills, bumps and even electrical surges. Make sure your new device has maximum protection, avoid unplanned costs and get peace of mind.

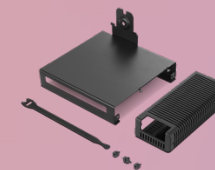
Base Warranty – Included with the systems you purchase, default 1- or 3-year coverage window.

Warranty Extensions & Upgrades – Service and protection that's right for your circumstances.

- Pick Up & Return Courier
- Onsite Support
- Technician Installed Customer
- Replaceable Unit Service
- International Warranty Upgrade

Lenovo may not offer the products, services or features discussed in this document in all regions. Lenovo may withdraw an offering at any time. Consult your local representative for information on offerings available in your area. Lenovo reserves the right to change specifications or other product information without notice. Lenovo is not responsible for photographic or typographical errors. Lenovo provides this publication "as is" without warranty of any kind, either express or implied, including the implied warranties of merchantability or fitness for a particular purpose.

Recommended Accessories



ThinkCentre Tiny Mounting Kit

4XFIR07369

The ThinkCentre Tiny Mounting Kit is a practical and versatile solution specifically designed to house the Tiny PC securely. Its innovative design allows seamless attachment to the bottom of P/T series monitor arms, p...



Lenovo Essential FHD Webcam

4XC1B34802

The Lenovo FHD Webcam is powered by a Full HD 1080P 2 Megapixel CMOS camera that allows your friends, family, and colleagues to see you as clear as day, even when they are worlds away. With full stereo dual-mics that ...

Please click [here](#) to view the full list of accessories.

Lenovo

PSREF
Product Specifications
Reference