

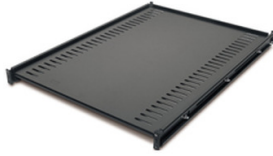
# Product datasheet

Specifications



## Fixed Shelf - 250lbs/114kg, Black

AR8122BLK



### Overview

<b>Presentation</b>	Fixed shelf to enable the mounting of tower units, monitors, and other equipment into the rack environment.
<b>Lead time</b>	Usually in Stock

### Main

<b>Product or component type</b>	Shelf
<b>Number of rack unit</b>	1U
<b>Number of cables</b>	1
<b>Provided equipment</b>	Installation guide Mounting hardware

### Physical

<b>Colour</b>	Black
<b>Height</b>	44 mm
<b>Width</b>	470 mm
<b>Depth</b>	660 mm
<b>Net weight</b>	8.18 kg
<b>Mounting location</b>	Front
<b>Mounting preference</b>	No preference
<b>Mounting mode</b>	Rack-mounted
<b>Maximum mounting depth</b>	825.5 mm
<b>Minimum mounting depth</b>	673.1 mm
<b>Permanent permissible load</b>	113.4 kg static

### Conformance

<b>Standards</b>	EIA-310D
------------------	----------

### Packing Units

<b>Unit Type of Package 1</b>	PCE
<b>Number of Units in Package 1</b>	1
<b>Package 1 Height</b>	77.5 cm
<b>Package 1 Width</b>	57.6 cm
<b>Package 1 Length</b>	8.9 cm

---

Package 1 Weight	10.438 kg
------------------	-----------

## Contractual warranty

---

Warranty (in months)	24
----------------------	----

## Environmental Data

Schneider Electric aims to achieve Net Zero status by 2050 through supply chain partnerships, lower impact materials, and circularity via our ongoing “Use Better, Use Longer, Use Again” campaign to extend product lifetimes and recyclability.

[Environmental Data explained >](#)

[How we assess product sustainability >](#)

### Environmental footprint

Total lifecycle Carbon footprint	37
----------------------------------	----

## Use Better

### Materials and Substances

Packaging made with recycled cardboard	No
--	----

Packaging without single use plastic	No
--------------------------------------	----

<a href="#">EU RoHS Directive</a>	Pro-active compliance (Product out of EU RoHS legal scope)
-----------------------------------	--

REACH Regulation	<a href="#">REACH Declaration</a>
------------------	-----------------------------------

## Use Again

### Repack and remanufacture

End of life manual availability	<a href="#">End of Life Information</a>
---------------------------------	---

Take-back	No
-----------	----


WEEE Label	 The product must be disposed on European Union markets following specific waste collection and never end up in rubbish bins
------------	---

Image of product / Alternate images

Alternative

---

